

Maximus™ Life of Field Simulations

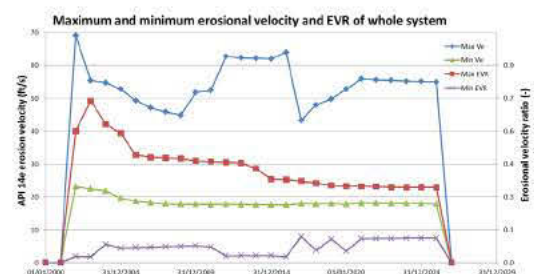
Customer Benefits

- Full life of field analysis capability assists optimization of field design and performance considering each phase of the field life, including initial field layout and equipment sizing, planning and execution of additional wells, and management of secondary recovery
- Rapid evaluation of variety of subsea processing and artificial lift options
- Complete system analysis, from reservoir to facility, in a single model ensures seamless, consistent and accurate performance predictions
- A high speed solver integral to the tool, along with an intuitive and flexible graphical user interface, allow for repetitive simulation of large and complex field developments, within reduced time frames as compared to conventional simulation tools

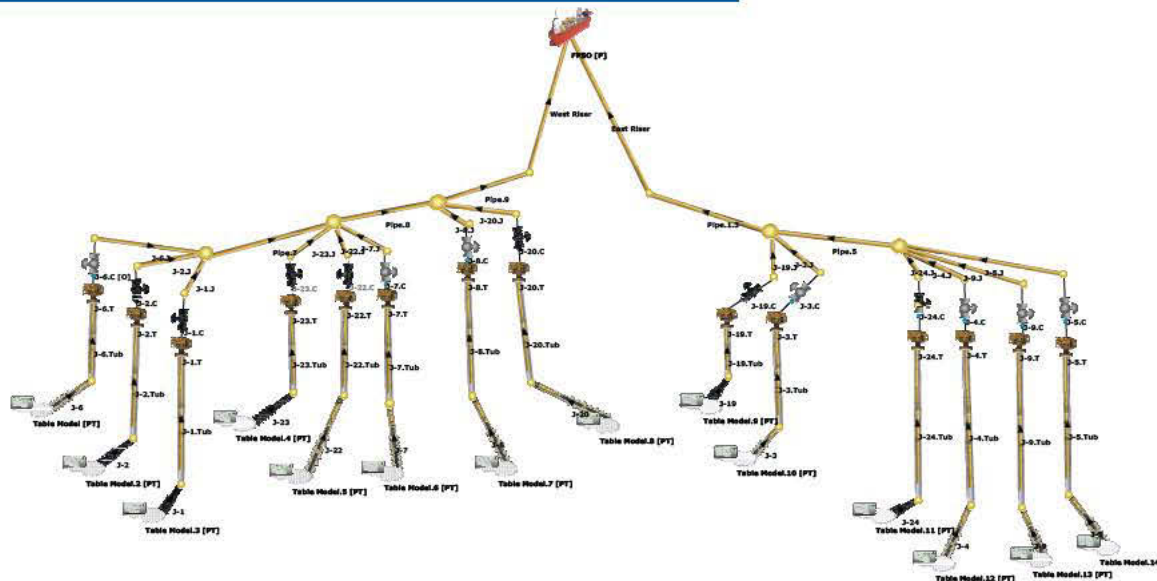
Introduction

INTECSEA recognizes that flow assurance requires advanced, multi-disciplinary expertise, and can be the difference between operational success and failure.

INTECSEA's comprehensive global flow assurance capability provides expertise and solutions throughout the project life cycle. To help our customers understand and manage their flow assurance challenges, our teams of experts have adopted Maximus™, a state-of-the-art design tool for steady state life-of-field simulation.

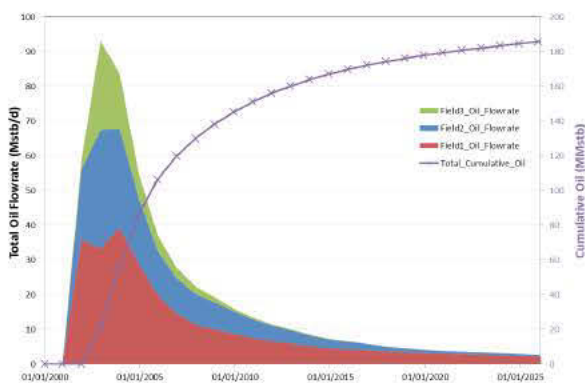


Maximus™ employs robust numerical techniques which improves the computational speed with even higher degrees of accuracy compared to other simulators.



About Maximus™

Traditional integrated production modelling tools force a trade-off between accuracy of the model and speed of the simulation, while traditional steady state tools restrict the user to multiple analytical simulations of single pipeline systems. As a result, the breadth of the study or accuracy of the results could be compromised in order to complete a conceptual study in a reasonable time frame. Maximus™, however, employs robust numerical techniques which improve the computational speed with even higher degrees of accuracy compared to other simulators, therefore increasing confidence in the chosen concept design.



Maximus™ Covers a Full Range of Flow Assurance Applications

- Deepwater, Arctic, Onshore Developments
- Reservoir to facility modeling
- Analysis of production profiles
- Network parametric studies
- Managing production impairment, late life production issues
- Planning for additional wells
- Evaluating impact and performance of Subsea Processing

The Maximus™ Advantage

- Higher speed of computation, enabling multiple runs in reduced time
- Single model for seamless analysis of entire field, regardless of complexity
- Supporting features such as estimation of CO₂ partial pressure data for corrosion analyses
- Intuitive and flexible graphical user interface

For more information, contact:
technology@intecsea.com

www.intecsea.com